



Born for Sports Free your ears

F1 Bone conduction bluetooth
sport headphone



Play Music



HD Voice



Long
standby



Noise
Reduction



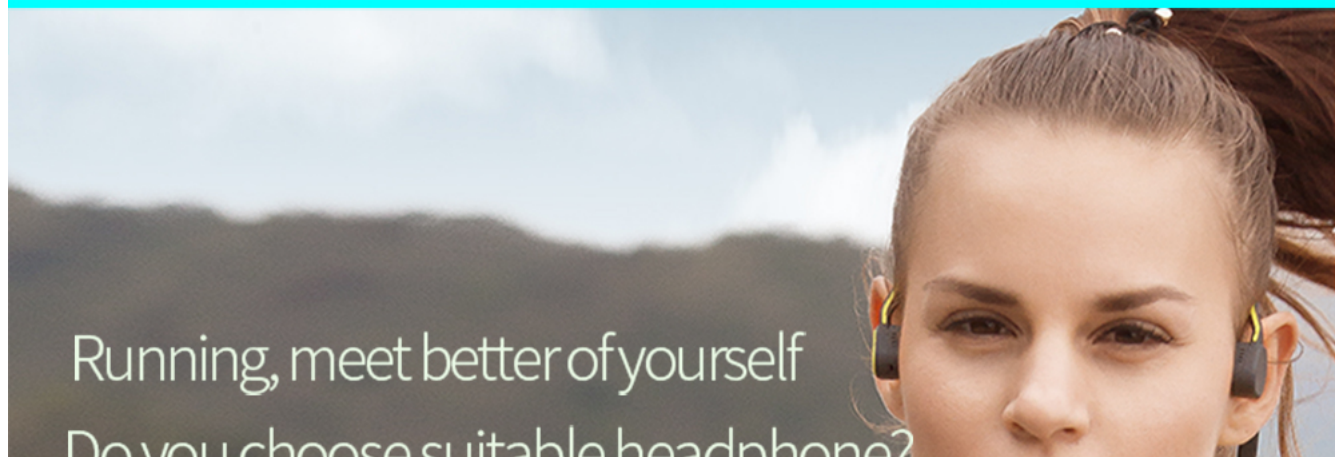
Waterproof



Ultralight



Wireless

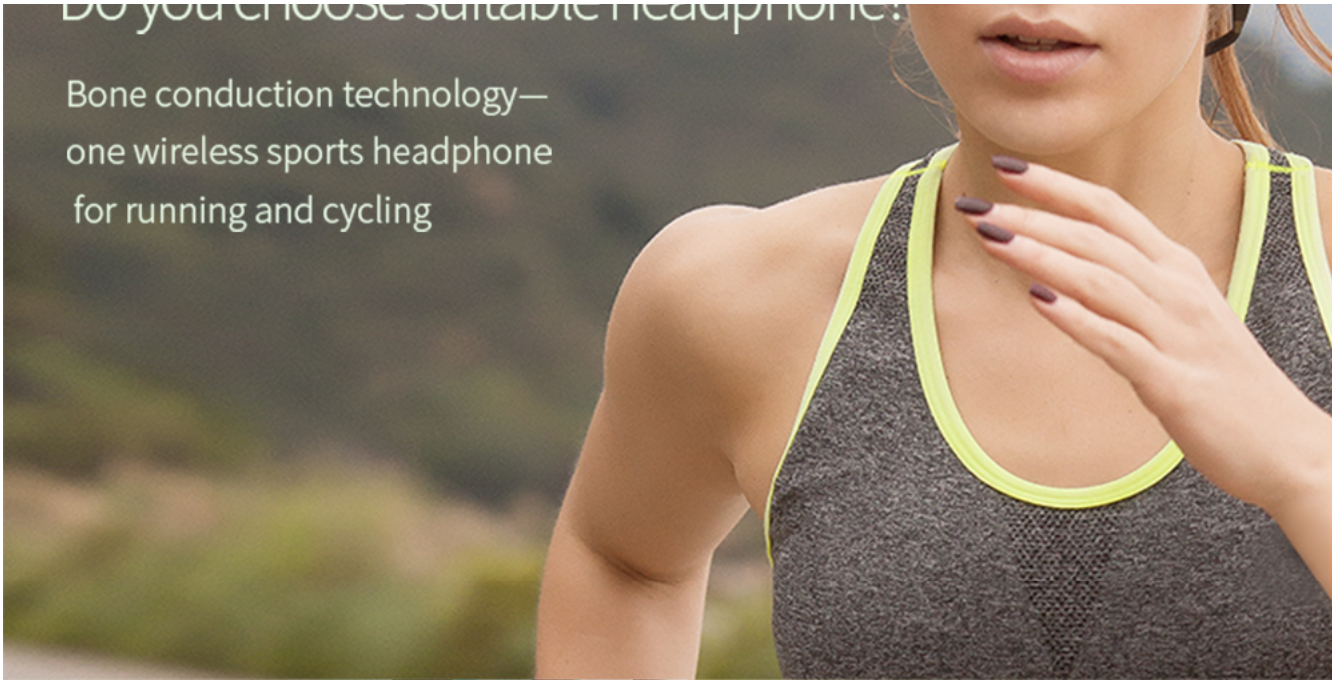


Running, meet better of yourself

Do you choose suitable headphone?

Do you choose suitable headphones?

Bone conduction technology—
one wireless sports headphone
for running and cycling



Sports safety

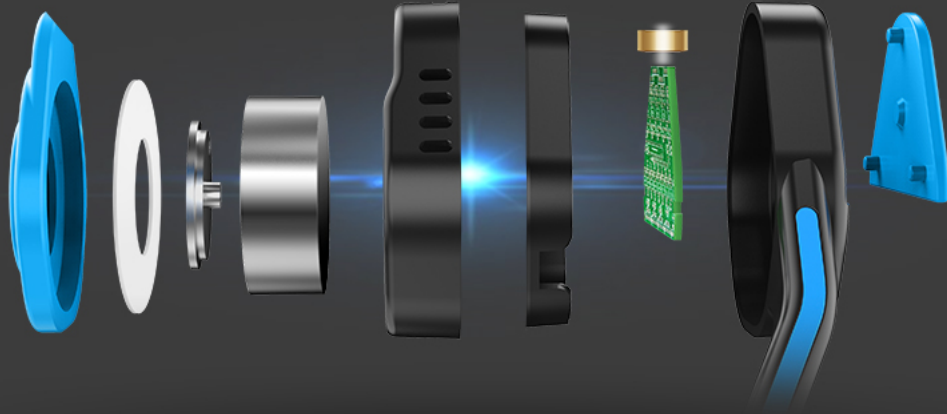
Free your ear with the new generation open-ear design and the revolutionary bone conduction-technology, make sport safer.

Pass the sound through the skull to the cochlea, no damage to the eardrum, no need to worry about loss of hearing

While enjoy the music, you can also hear the sounds of the environment, such as sound of the vehicle etc when running, then can avoid the danger occurrence

Precise details

Each headset is a new experience of sound quality
Suspension shock absorption design, the sound
levels are clearer and the details are rich



Natural sound

Listen to Hi-Fi music with
CSR Bluetooth chip and
CVC noise reduction en-
hanced the call quality



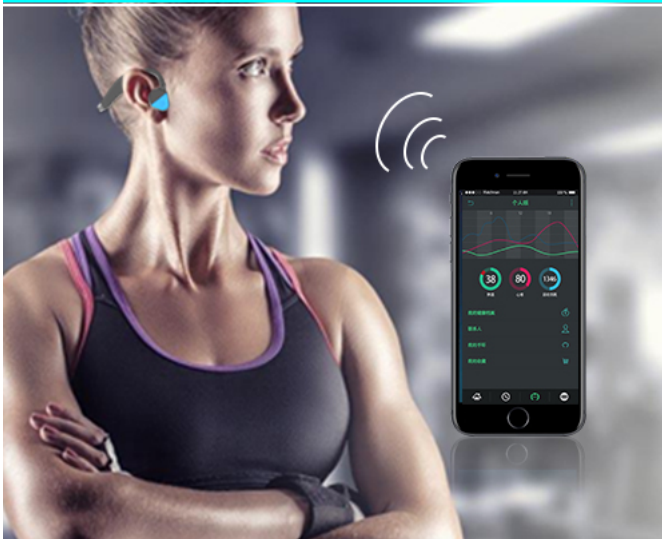
Application Scenarios



Play Music let music make the boring exercises enjoyable



Study Make full use of debris time, listen to audiobooks etc during running



Body building Connect the relevant fitness APP for voice instruction, let the sweat come down like raindrops in the gym



Talk It's safer to drive while you're calling, because you can hear the sound of the environment at the same time.

Stable Wearing

Ergonomic and anti-drop design for free movement

Titanium alloy backbone



Ultra-light design with
only 38 grams weight

The back bone adopts
titanium alloy, not easy
to deform, close to the
head



Water proof construction

Resist the rains and sweat





HD Vocie

Build-in microphone with high sensitivity, CVC noise reduction and clear voice

Long standby

Life like a marathon, keep improving yourself



(Depending on personal use, cell phone settings and environmental temperatures vary)

180 mAh 6 h 120

Li-battery

talking

songs music play

Easy to wear

Wear simple, comfortable, protect eardrum



Bone conduction principle

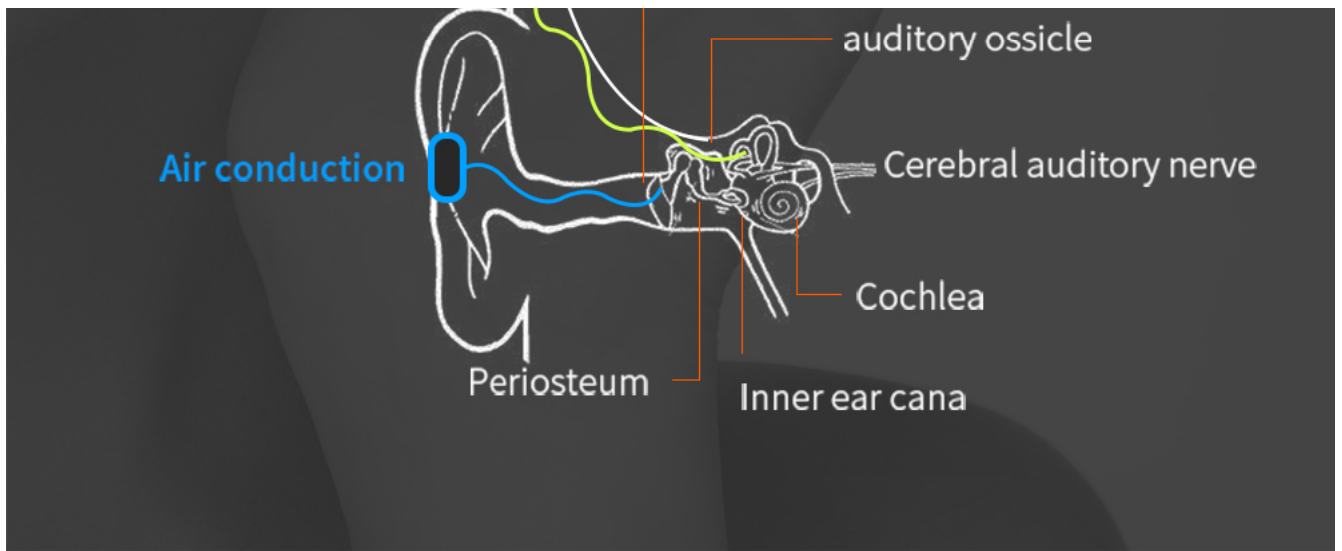
Man hears the sound, not only by sound waves through vibration of the air--Stimulate eardrum--Transmit to the auditory nerve, but also through the skull and the jaw to the auditory nerve. This conduction mode is called bone conduction.

Compared with the traditional headphone, the advantage of the bone conduction headphone is to hear the surrounding sound and protect the hearing. After decades of development, the sound quality has been improved, and due to the high cost formerly, it was used only in military police and other special fields. At present, product costs have been greatly reduced and can be better applied to the consumer market.

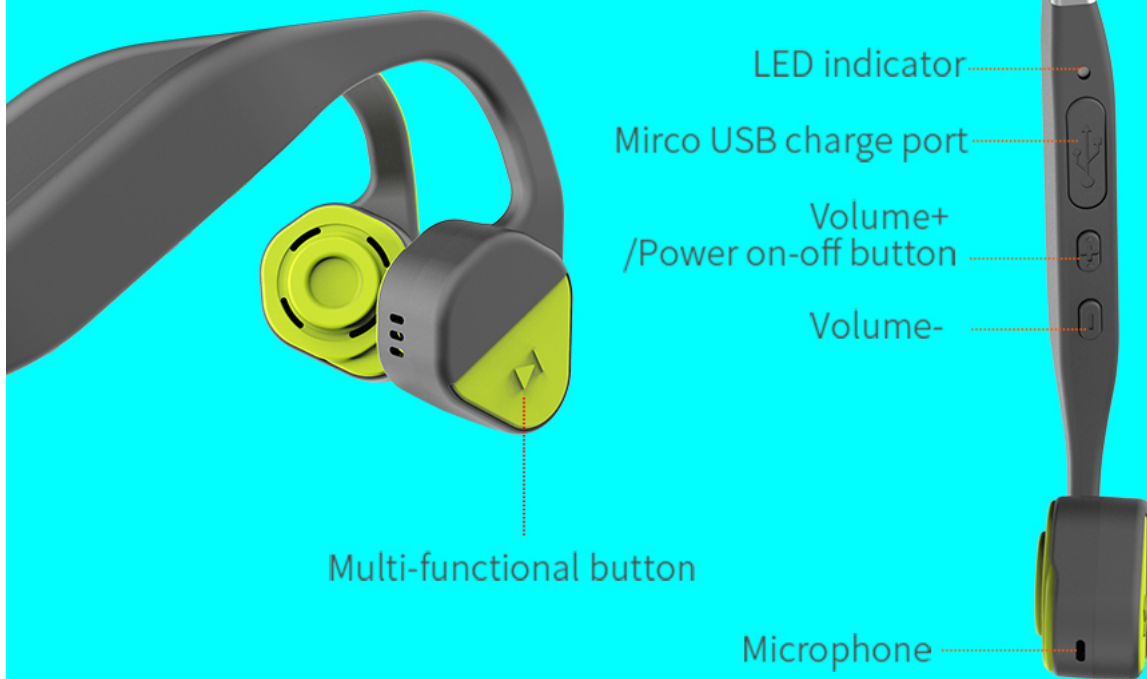
Bone conduction



External auditory canal

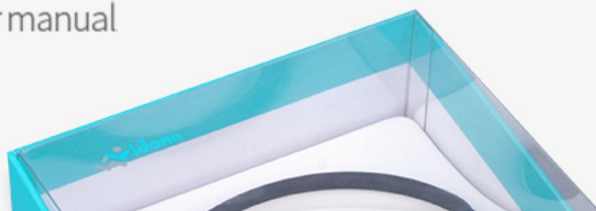


Function button introduction



Packing accessories

USB charge cable, user manual





Product parameter

Speaker type	bone conduction speaker
Model number	F1
Materia	Titanium+TPU
Bluetooth version	Bluetooth V4.1
Frequency range	20Hz~20KHz
Battery	180 mAh Li-battery
Standby	7 days
Duration play time	6 hours
Charge time	1.5 Hours
Charge port	Micro-USB
Product weigh	38g
IP grade	IP55
Package	1pcs bone conduction head- phone+1pcs USB charge ca- ble+1pcs user manual

User quick guide

1. Charge

Charge the headphones with the included Micro USB charging cable. Red LED means it's charging, the LED indicator will turn blue from red when charging is complete.

2. Turn on/off

Keep pressing the volume up button for 3 seconds, there is a voice prompt by the word "Power on" or "Power off".

3. Pair

While F1 is power off, press and hold the volume up button for 5 seconds until the LED flashed red and blue alternately and there is voice prompt by the word "Pairing".

4. Connect

In pairing mode, enable the Bluetooth settings in your device and select "Vidonn F1", Vidonn F1 will be connected within seconds and there is a voice prompt by the word "Connected".

Status	LED indicator status
Charging	Solid red
Charging complete	Solid blue
Power on	Flash blue once
Power off	Flash red once
Pairing mode	Flash red and blue alternately
Paired	Flash blue slowly
Unpaired	Flash red slowly
Playing music	Breathing blue
Incoming call	Solid blue(fast)
Low battery	Flash red slowly

FAQ

1. Is it waterproof?

Yes, its waterproof grade is IP55, could resistant rain and sweat, but can't not use under water.

2. How to check the battery capacity?

There is voice prompt by the word "Battery low" when battery capacity is less than

4. Where to put the smartphones can make the bluetooth signal stable during sports?

Due to the character of bluetooth, your body may resist the bluetooth signal, then the voice or music may disconnect, the headphone's antenna is at the right side, in order to reduce this signal disconnection, we advise to put the smartphone on the right side or front of body.

5. How to make sure listen clearly in noisy environment such as in plane?

In noisy environment, can put the earplug, then can listen clearly

6. Why feel vibration when volume is high?

This is the work principle of F1, the voice is generated by vibration and conducted by bone, so the bigger the volume is, the stronger the vibration is. We advise to set 70%